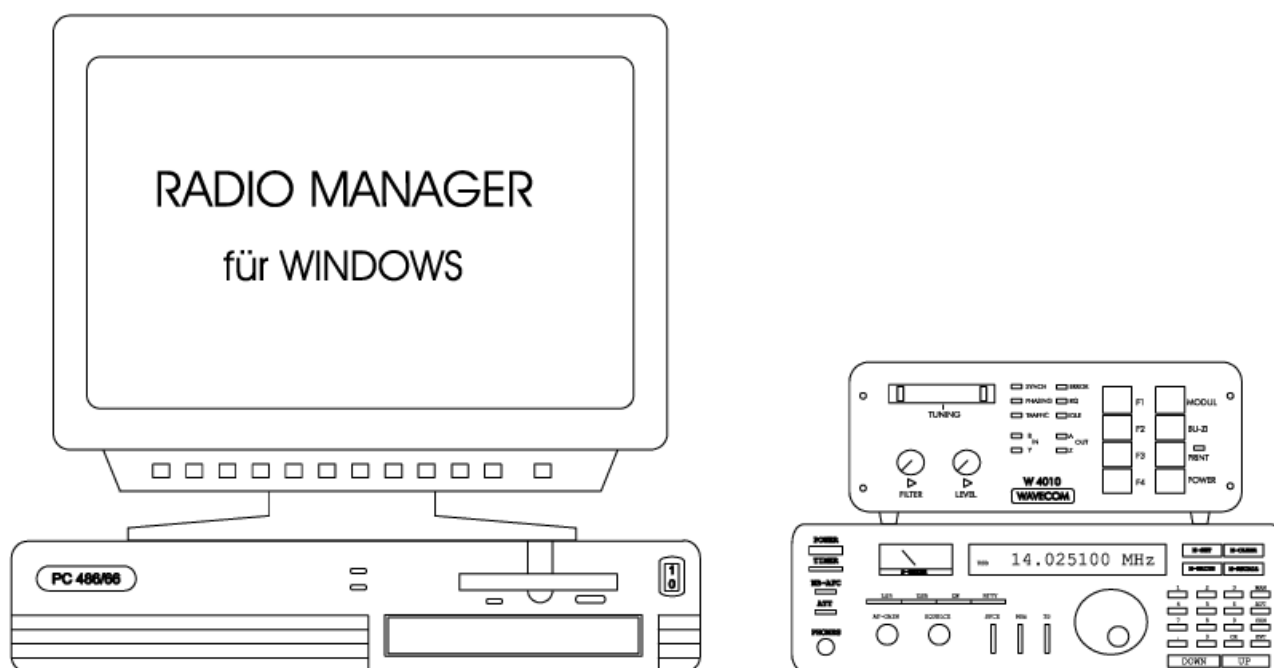


OPTION "REMOTE CONTROL" FOR THE W 4010

The control of the short wave receiver with the best-known pc-programme RADIO MANAGER FOR WINDOWS is becoming more and more popular. The extensive frequency lists with more than 30,000 entries and the very easy way to use the Radio Manager offer a totally new comfort in operation. With the option "Remote Control" the W 4010 Superdecoder now is remotable in every function and keeps to be an up-to-date product.

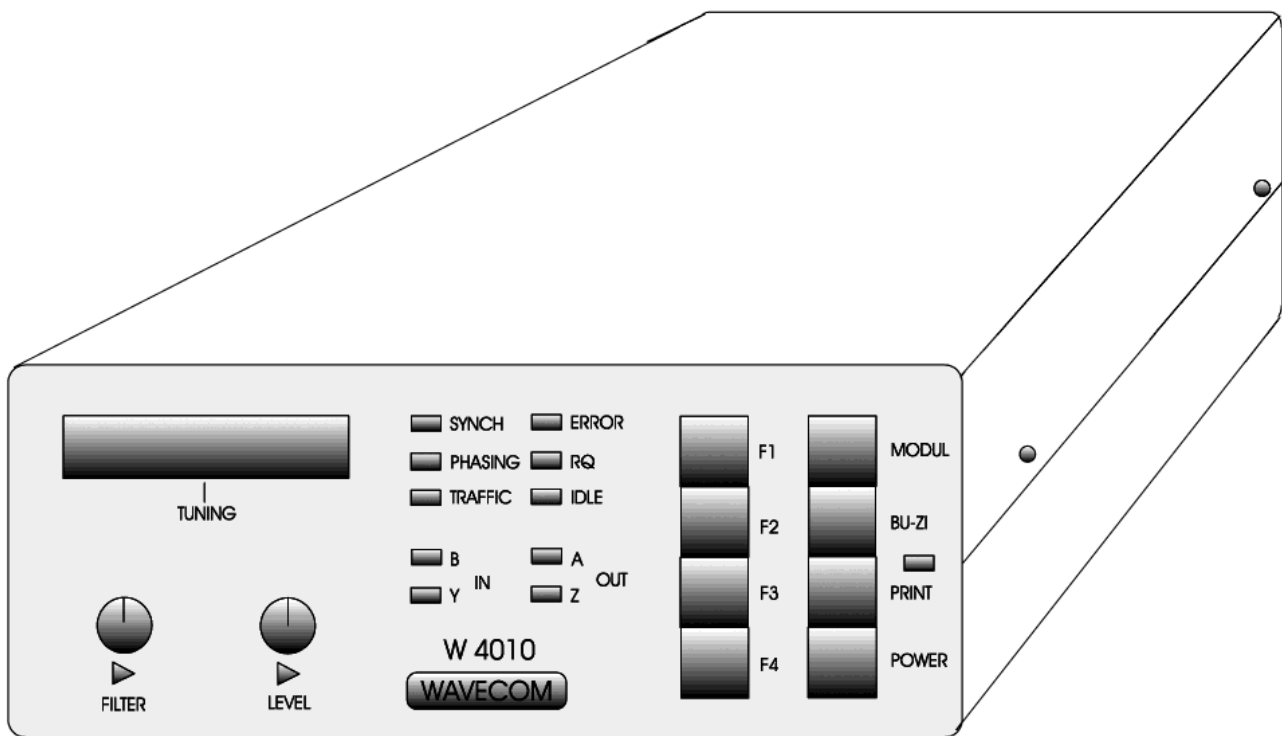
The simple handling and the excellent software of the W 4010 are unbeaten in this price category furthermore.



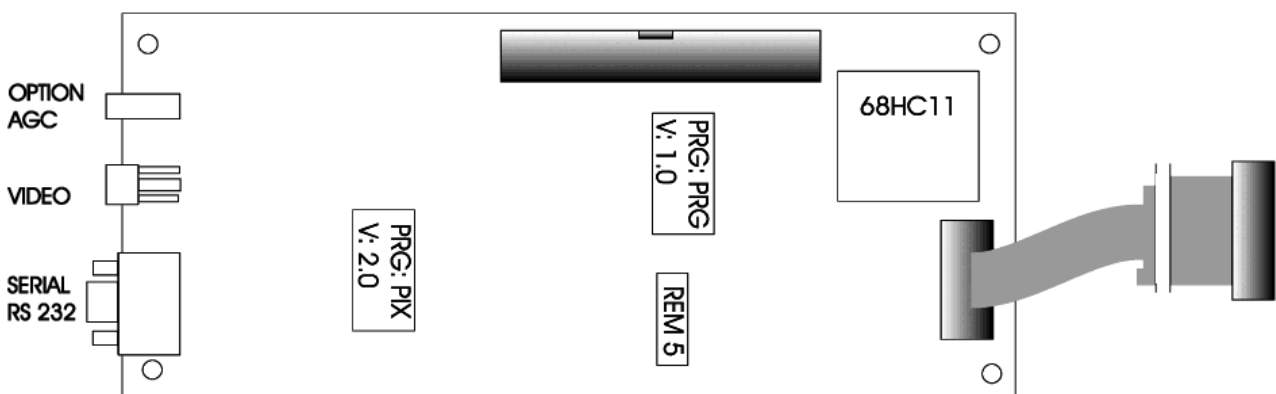
TECHNICAL DATA

Interface:	RS-232 serial
Format of the data:	freely adjustable via menu
Remote address:	0 to 9
Things to be delivered:	1 × Remote Control-Card with CPU 68HC11 1 × Back panel W 4010 1 × Cable with plug Build-In- and User's manual
Build-In:	actual videocard at the bottom of the unit has to be exchanged versus the remote board, everything is to plug
Prices:	Germany DM 490.-- + 15 % MWST Switzerland CHF 490.-- + 6.5 % MWST
Sales:	WAVECOM Elektronik AG, Hammerstrasse 8 CH-8180 Buelach Tel. 01-858 70 60 Fax 01-872 70 66

BUILT-IN-MANUAL REMOTE CONTROL FOR THE WAVECOM W 4010



VIDEO AND REMOTE CONTROL PCB



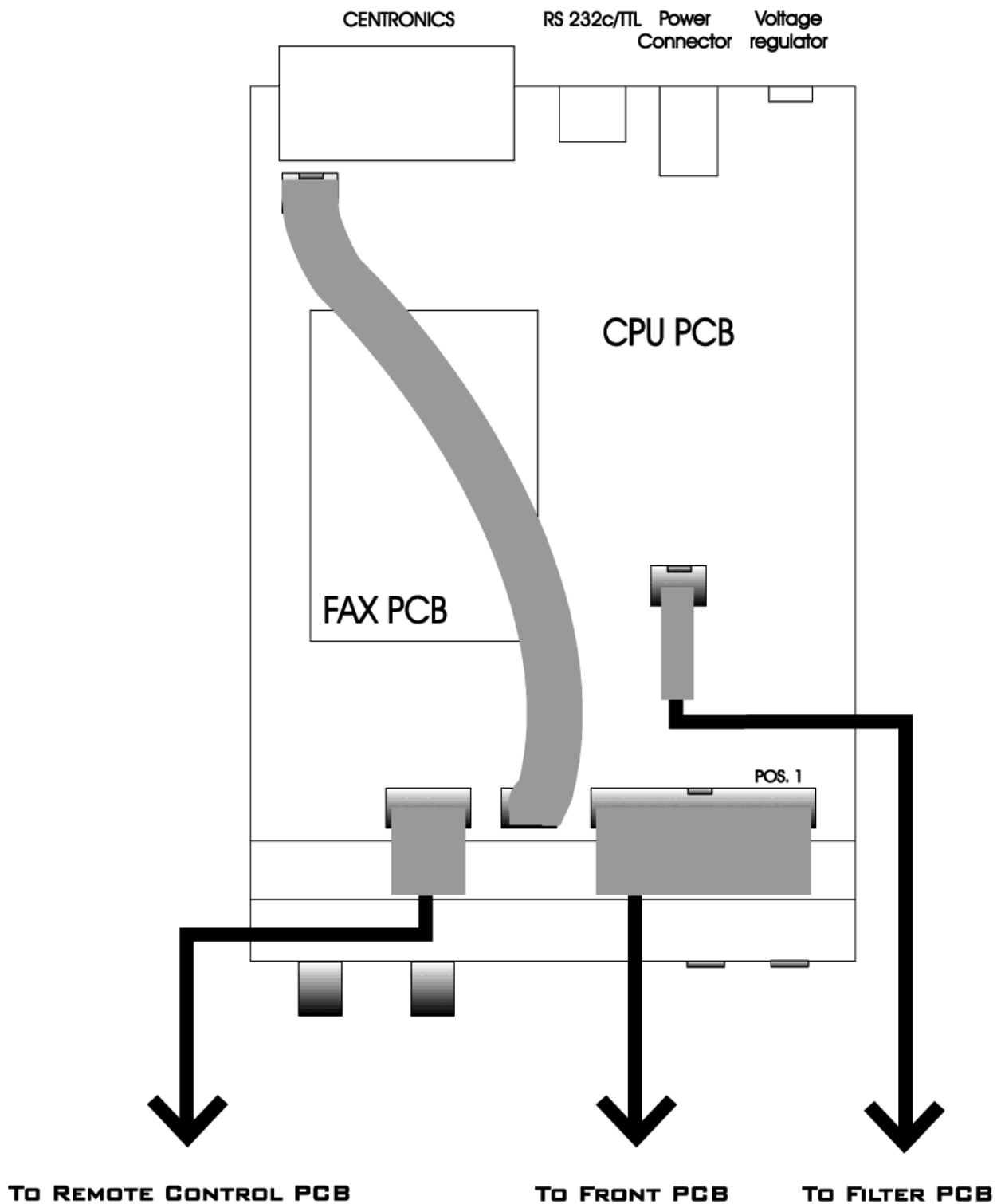
(1) First the four screws of the upper case lid have to be removed. Upper and lower lid can be put aside.

(2a) Then the back panel has to be removed. Therefore first the voltage regulator has to be screwed off see page 5). When this has happened, the four screws of the back side get screwed off and the panel can be taken away.

(2b) Now in opposite succession the back panel can be rearranged again.

(3) Put the W 4010 with the front to you.

W 4010 TOP VIEW

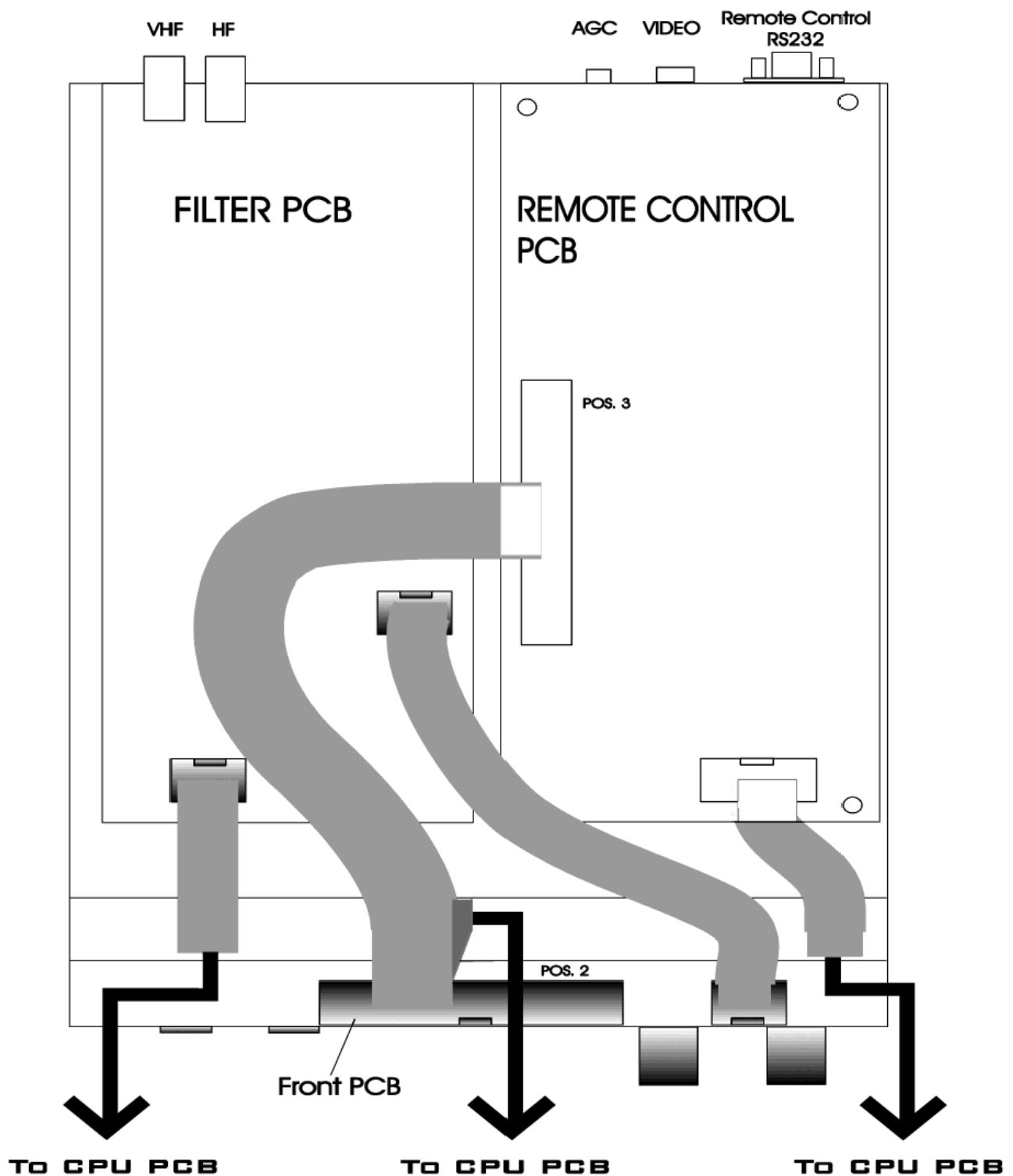


(4) Detach the 40-pole-cable on the CPU PCB and replace it with the enclosed 40-pole-cable (POS. 1).

(5) The 16-pole-cable has to be replaced with the enclosed 16-pole-cable (POS. A).

(6) Now the W 4010 has to be turned around, so that you have the lower side in front of you.

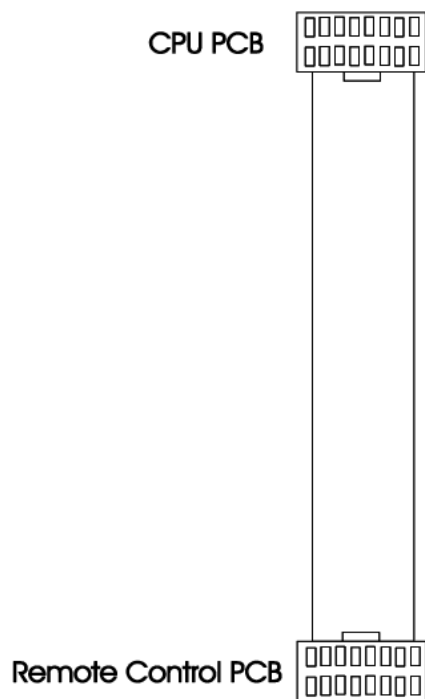
W 4010 BOTTOM VIEW



- (7) The video PCB has to be removed. Please return it to Wavecom.
- (8) Pull the 16-pole-cable as well as the 40-pole-cable through the empty space, in which already the other cables are placed.
- (9) Now attach the 16-pole-cable to the Remote Control PCB (POS.B).
- (10) The 40-pole-cable is to be attached to the front PCB (POS.2) and to the Remote Control PCB (POS.3).

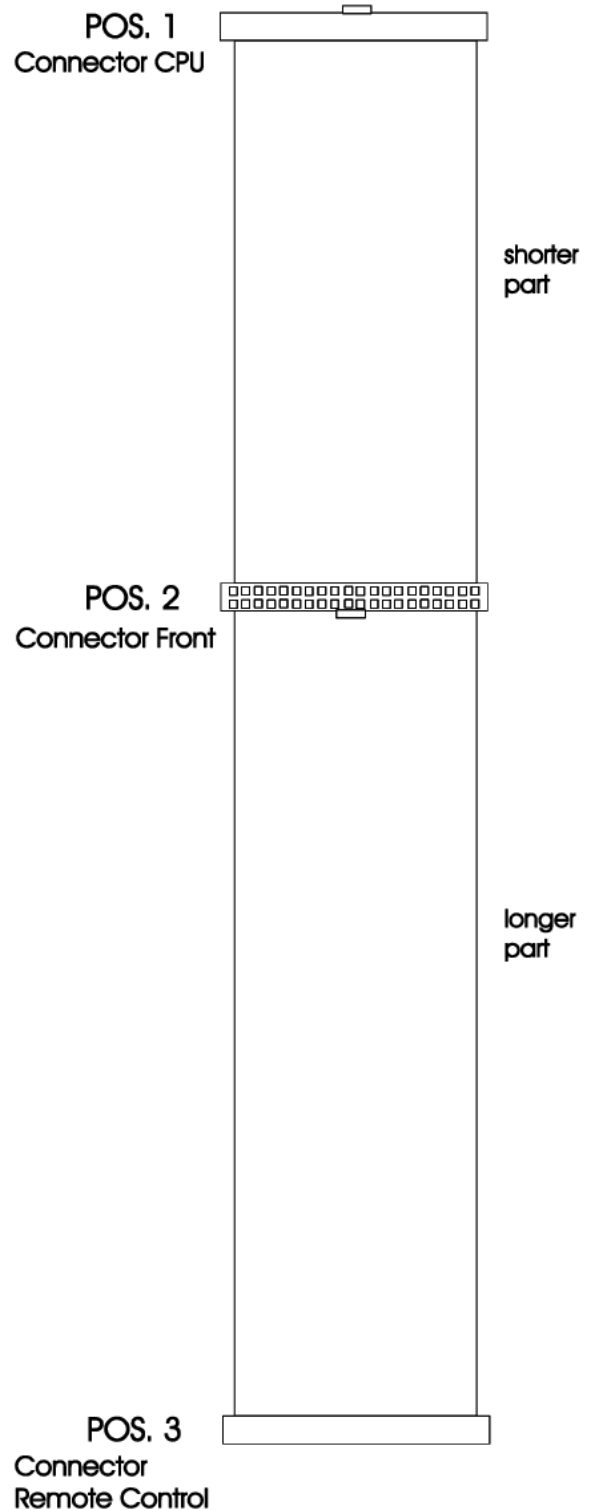
16-pole-cable

CPU PCB
to Remote Control PCB

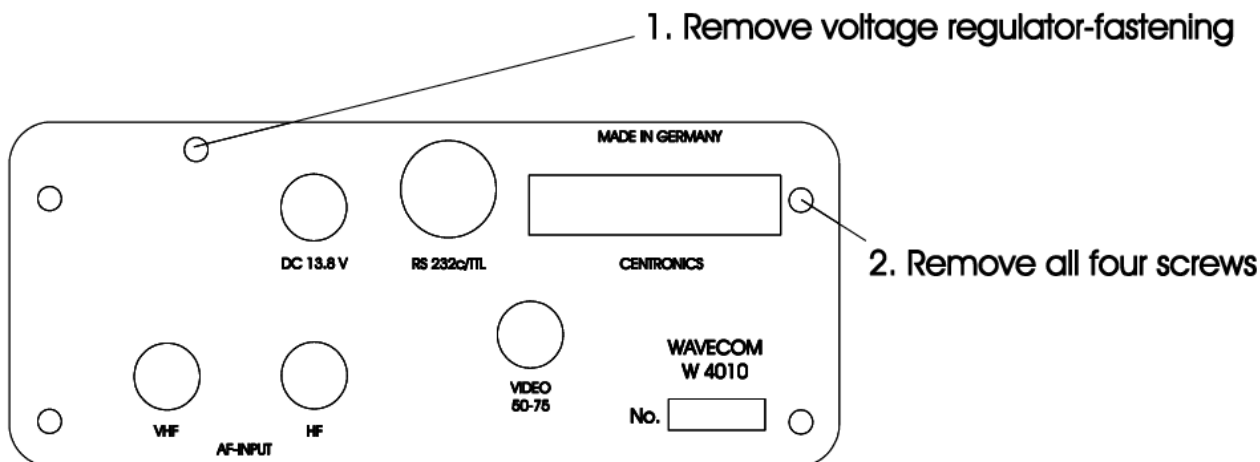


40-pole-cable

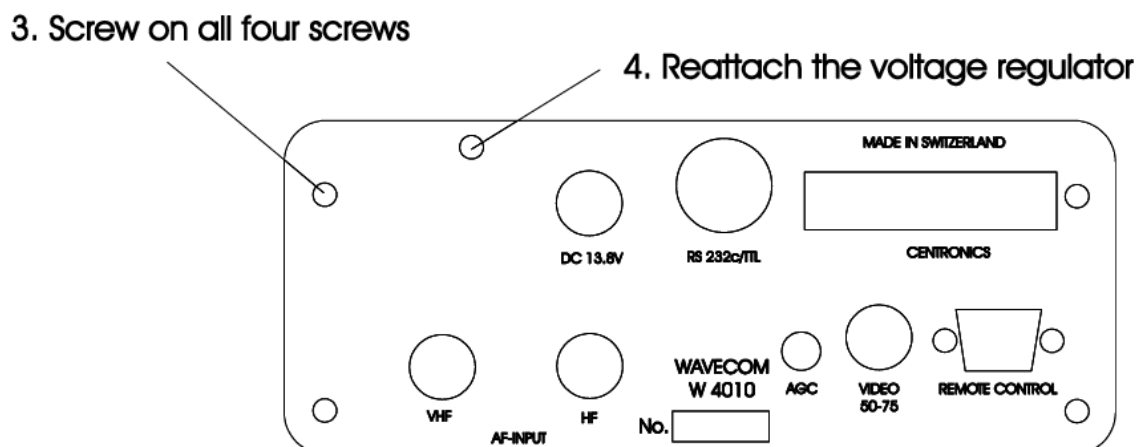
CPU PCB
to front PCB
to Remote Control PCB



Present rear panel



is to be replaced with the new rear panel



(11) For the fastening of the Remote Control PCB the fastening bolts of the DSUB-plug have to be removed.

(12) When the Remote Control PCB is screwed on, also the fastening bolts of the DSUB-plug can be screwed on from the outside against the back panel.

(13) Finally the lower and upper lid of the case get screwed together.

A LOT OF FUN WITH YOUR REMOTE CONTROL wishes you Simone, DD0GS

VOLTAGE REGULATOR

